

CHAPTER 3.3

THE DEPARTMENT OF EDUCATION

3.3.1 Sector Perspective

Education in Indonesia forms a major sector of the country's development effort. GOI figures (published in "Indonesia 1992") indicate that the number of students beginning tertiary education rose from 335,000 in 1989/1990 to 524,000 in 1990/1991. In part this was the result of a concerted effort to increase the number of tertiary education lecturers and student places, and partly through the expansion in recent years of the number of tertiary education establishments. In addition to some 45 state universities there are over 700 private universities throughout the archipelago. As well as increasing the capacity of the higher education system, major efforts are going ahead to upgrade the educational qualifications of lecturers through Masters and PhD programs in Indonesia and abroad. In addition to GOI's own funding for higher education a number of donors are also involved in the field. AIDAB, for instance, sponsors some 200 students per year for higher studies in Australia, and several other countries provide similar opportunities. Australia and other bilateral and multilateral donors and lenders are also assisting to upgrade university facilities in a range of multi-university programs throughout Indonesia.

Significant improvements have been made in recent years to the percentages of school age children attending primary, junior high and senior high schools. In 1992 GOI published the figures given in Table 3.3.1 in "Indonesia 1992". (Note that secondary school figures also include students in technical and other specialist secondary education education). This table highlights the magnitude of the education task.

School type	Age band	%age in age group receiving education	Number attending
Sekolah dasar (Primary school)	7-12	99.6	29.7 million
Sekolah Menengah Pertama (Junior High School)	13-15	47.1	5.95 million
Sekolah Menengah Atas (Senior High School)	16-18	34.7	Not given

Table 3.3.1

Percentages of age groups in primary and secondary education in 1990/91

Major efforts have also been undertaken throughout Repelita 5 to increase the numbers and quality of primary and secondary schools.

3.3.2 The Structure of the Department of Education

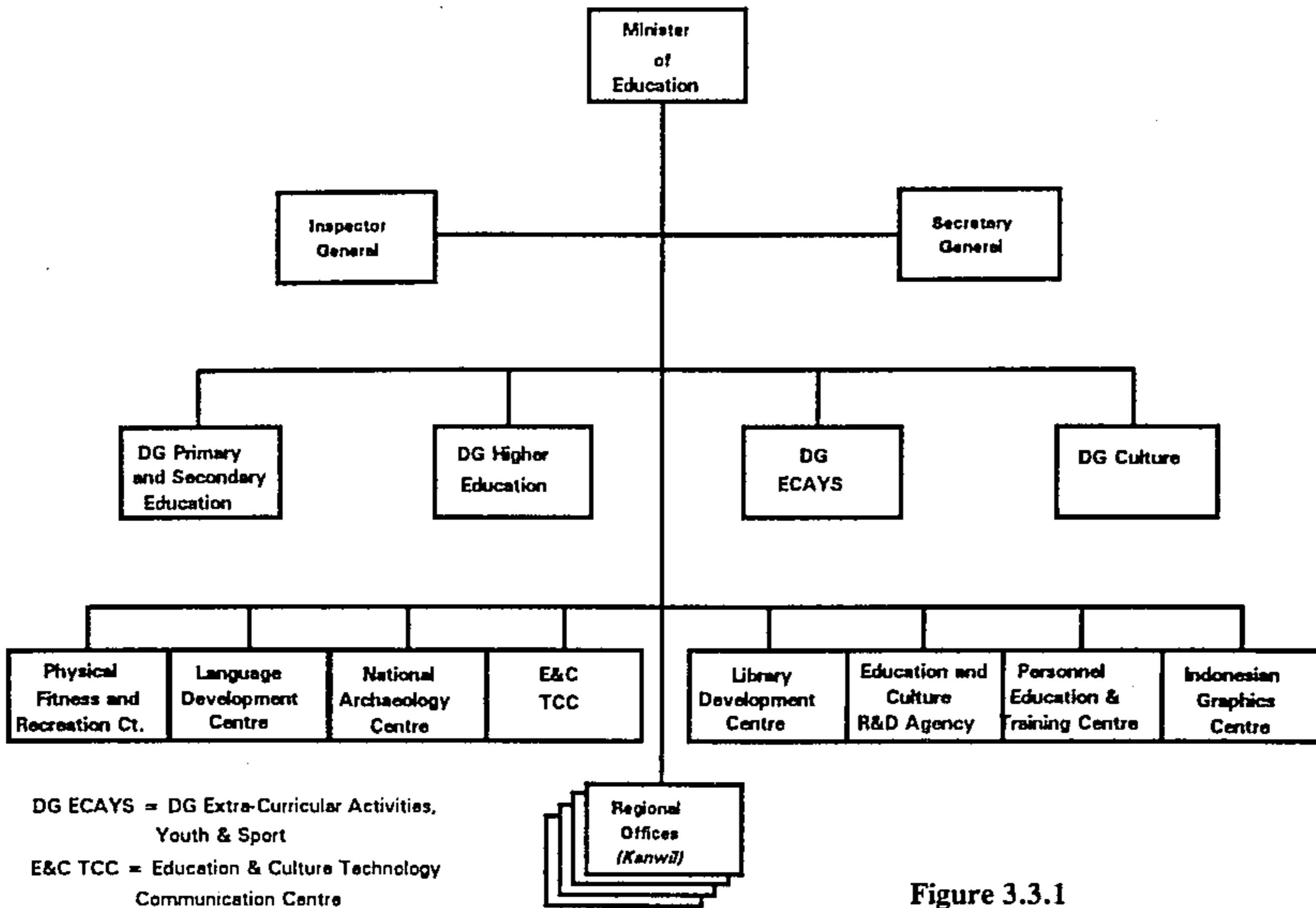


Figure 3.3.1
 Organisation of
 The Department of Education

3.3.3 The Secretariat-General of Education

The functions of Secretariats-General are covered in Section 2.1. For the Department of Education, the Secretariat-General consists of the following bureaux:-

- | | |
|--------------------------------------|--------------------------|
| <i>Perencanaan</i> | Planning |
| <i>Kepegawaian</i> | Personnel |
| <i>Perlengkapan</i> | Supplies |
| <i>Hukum dan Hubungan Masyarakat</i> | Law and Public Relations |
| <i>Organisasi</i> | Organisation |
| <i>Tata Usaha</i> | Administration |
| <i>Keuangan</i> | Finance |
| <i>Kerjasama Luar Negeri</i> | Foreign Cooperation |

The Secretariat-General of Education is located in Jakarta.

The Bureaux of Planning, Finance and Foreign Cooperation are likely to have more direct involvement in foreign assisted projects, particularly in respect of budgeting.

3.3.4 The Inspectorate-General of Education

For the Department of Education, the Inspectorate-General consists of the following units:-

<i>Sekretariat</i>	Secretariat
<i>Inspektur Kepegawaian</i>	Personnel
<i>Inspektur Keuangan</i>	Finance
<i>Inspektur Perlengkapan</i>	Supplies
<i>Inspektur Pendidikan Dasar dan Menengah</i>	Primary and Secondary Education
<i>Inspektur Pendidikan Tinggi</i>	Higher Education
<i>Inspektur Pendidikan Luar Sekolah Pemuda dan Olahraga</i>	Extra-curricular Activities, Youth and Sport
<i>Inspektur Kebudayaan</i>	Culture
<i>Inspektur Proyek Pembangunan</i>	Development Projects

All Inspectorates are located in Jakarta.

3.3.5 The Directorates-General in Education

The four D.Gs of Education are as follows:-

3.3.5.1. The Directorate-General of Primary and Secondary Education

The D.G of Primary and Secondary Education (*DJ Pendidikan Dasar dan Menengah*) consists of a Secretariat and seven Directorates:-

<i>Pendidikan Menengah Umum</i>	Secondary (or Middle) Education
<i>Pendidikan Dasar</i>	Primary (or Basic) Education
<i>Pendidikan Menengah Kejuruan</i>	Special Secondary Education
<i>Pendidikan Guru dan Tenaga Teknis</i>	Teacher and Technical Skill Training
<i>Sarana Pendidikan</i>	Educational Facilities
<i>Sekolah Swasta</i>	Private Schools
<i>Pembinaan Kesiswaan</i>	Student Development

The D.G of Primary and Secondary Education is located in Jakarta.

3.3.5.2 The Directorate General of Higher Education

The D.G of Higher Education (*DJ Pendidikan Tinggi*) consists of a Secretariat and four Directorates:-

<i>Pembinaan Sarana Akademis</i>	Academic Facilities Development
<i>Pembinaan Penelitian dan Pengabdian pada Masyarakat</i>	Research and Public Service Development
<i>Perguruan Tinggi Swasta</i>	Private Universities
<i>Kemahasiswaan</i>	Student Development

The D.G of Higher Education is located in Jakarta.

3.3.5.3 The Directorate-General of Extra Curricular Activity, Youth and Sport

The D.G of Extra Curricular Activity, Youth and Sport (*DJ Pendidikan Luar Sekolah, Pemuda dan Olah Raga*) consists of a Secretariat and four Directorates:-

<i>Pendidikan Masyarakat</i>	Community Education
<i>Keolahragaan</i>	Sports
<i>Pembinaan Generasi Muda</i>	Guidance of the Younger Generation
<i>Pendidikan Tenaga Teknis</i>	Technical Skills Development

The D.G of Extra Curricular Activity, Youth and Sport is located in Jakarta.

3.3.5.4 The Directorate-General of Culture

The D.G of Culture (*DJ Kebudayaan*) consists of a Secretariat and five Directorates:-

<i>Sejarah dan Nilai Tradisional</i>	History and Traditional Values
<i>Kesenian</i>	Arts
<i>Permuseuman</i>	Museums
<i>Perlindungan dan Pembinaan Peninggalan Sejarah dan Purbakal</i>	Protection and Supervision of Archaeology and Artefacts
<i>Pembinaan Penghayat Kepercayaan Terhadap Tuhan Yang Masa Esa</i>	Protection Spiritual Belief in God

The D.G of Culture is located in Jakarta.

3.3.6. The Central Support Units in Education

There are 8 central support units in the Department of Education:-

3.3.6.1 Education and Culture Research and Development Agency

The Education and Culture Research and Development Agency consists of a secretariat and the following centres:-

<i>Pusat Penelitian Pendidikan dan Kebudayaan</i>	Educational and Cultural Research Centre
<i>Pusat Pengembangan Kurikulum dan Pendidikan</i>	Educational Structure and Curriculum Development Centre
<i>Pusat Informasi untuk Pengelolaan Pendidikan dan Kebudayaan</i>	Information Centre for Education and Culture Development
<i>Pusat Penelitian dan Pengembangan Sistem Pengujian</i>	Examination System Research and Development Centre

3.3.6.2 Personnel Education and Training Centre

The *Pusat Pendidikan dan Latihan Pegawai* consists of the following units:-

<i>Bagian Tata Usaha</i>	Administration
<i>Bidang Bina Program Pendidikan dan Latihan</i>	Staff Education and Training Planning
<i>Bidang Pengaturan Penyelenggaraan Pendidikan dan Latihan</i>	Staff Education and Training Implementation
<i>Bidang Laporan dan Evaluasi</i>	Reporting and Evaluation

3.3.6.3 Physical Fitness and Recreation Centre

The *Pusat Kesegaran Jasmani dan Rekreasi* consists of the following units:-

<i>Bagian Tata Usaha</i>	Administration
<i>Bidang Tes dan Pengukuran</i>	Testing and measurement
<i>Bidang Laboratorium Gerak Kerja Jasmani</i>	Physical Fitness Laboratory
<i>Bidang Rekreasi</i>	Recreation
<i>Bidang Kesehatan Sekolah</i>	School Health

3.3.6.4 Language Guidance and Development Centre

The *Pusat Pembinaan dan Pengembangan Bahasa* consists of the following units:-

<i>Bagian Tata Usaha</i>	Administration
<i>Bidang Bahasa Indonesia dan Daerah</i>	Indonesian and Local Language

<i>Bidang Sastra Indonesia dan Daerah</i>	Indonesian and Local Literature
<i>Bidang Perkamusan dan Peristilahan</i>	Dictionaries and Terminology
<i>Bidang Pengembangan Bahasa dan Sastra</i>	Language and Literature Development

3.3.6.5 National Archaeology Centre

The *Pusat Penelitian Arkeologi Nasional* consists of the following units:-

<i>Bagian Tata Usaha</i>	Administration
<i>Bidang Prasejarah</i>	Pre-history
<i>Bidang Arkeologi Klasik</i>	Classical Archaeology
<i>Bidang Arkeologi Islam</i>	Islamic Archaeology
<i>Bidang Arkeometri</i>	Archaeometry

3.3.6.6 Education and Culture Technology Communication Centre

The *Pusat Teknologi Komunikasi Pendidikan dan Kebudayaan* consists of the following units:-

<i>Bagian Tata Usaha</i>	Administration
<i>Bidang Penyusunan dan Pembinaan Program</i>	Program Preparation
<i>Bidang Pengembangan Program</i>	Program Development
<i>Bidang Produksi</i>	Production
<i>Bidang Analisa dan Evaluasi</i>	Analysis and Evaluation
<i>Balai Produksi Media</i>	Media Production
<i>Komunikasi Pendidikan dan Kebudayaan</i>	Education and Culture Communication
<i>Sanggar Komunikasi</i>	Technology Studio

3.3.6.7 Indonesian Graphics Centre

The *Pusat Grafika Indonesia* consists of the following units:-

<i>Bagian Tata Usaha</i>	Administration
<i>Bidang Bina Program Pendidikan</i>	Graphics Education Development
<i>Bidang Pelaksanaan dan Pengendalian</i>	Graphics Implementation
<i>Bidang Penolahan Naskah dan Publikasi</i>	Documentation and Publications
<i>Laboratorium Grafika</i>	Graphics Laboratory

3.3.6.8 Library Development Centre

The *Pusat Pembinaan Perpustakaan* consists of the following units:-

<i>Bagian Tata Usaha</i>	Administration
<i>Bidang Perpustakaan Wilayah dan Perpustakaan Umum</i>	Regional and Public Libraries
<i>Bidang Perpustakaan Sekolah</i>	School Libraries
<i>Bidang Pembinaan Perpustakawan</i>	Librarian Development
<i>Bidang Dokumentasi dan Publikasi</i>	Documentation and Publications

3.3.7 Provincial arrangements for Education

3.3.7.1 *Kanwil* and *Dinas* structures

The Department of Education operates a system of regional vertical offices or *kantor wilayah* in all 27 provinces of Indonesia. There are 3 types of *kanwil* Education Office allowed by legislation:-

Type A consists of the following units:-

<i>Sekretariat</i>	Secretariat
<i>Bagian Perencanaan</i>	Planning Division
<i>Bidang Pendidikan Dasar</i>	Primary Education Division
<i>Bidang Pendidikan Menengah Umum</i>	Secondary Education Division
<i>Bidang Pendidikan Menengah Kejuruan</i>	Special Secondary Education Division
<i>Bidang Pendidikan Guru</i>	Teacher Education Division
<i>Bidang Pendidikan Masyarakat</i>	Community Education Division
<i>Bidang Pembinaan Generasi Muda</i>	Youth Guidance Division
<i>Bidang Keolahragaan</i>	Sports Division
<i>Bidang Kesenian</i>	Arts Division
<i>Bidang Permuseuman, Sejarah dan Kepurbakalaan</i>	Museum, History and Archaeological Division
<i>Pengawas</i>	Supervisors/Inspectorate

Type B consists of eleven divisions, based on Type A but primary education and teacher education are grouped into one division.

Type C consists of ten divisions, as for Type B, but with youth guidance and sports grouped as one division.

Type A *Kanwil* Education are in Jakarta, Jawa Barat, Jawa Timur, Jawa Tengah, Sumatera Utara and Sulawesi Selatan.

Type B *Kanwil* Education are in Aceh, Sumatera Barat, Riau, Jambi, Sumatera Selatan, Lampung, Yogyakarta, Kalimantan Barat, Kalimantan Selatan, Sulawesi Utara, Maluku, Irian Jaya, Bali, NTB and NTT.

Type C *Kanwil* Education are in Bengkulu, Sulawesi Tenggara, Sulawesi Tengah, Kalimantan Tengah, Kalimantan Timur and Timor Timur.

The Department of Education also maintains a system of district and sub-district offices, or *Kantor Departemen (Kandep)*. The District level office consists of the following sub-units:-

<i>Sub-Bagian Tata Usaha</i>	Administration Sub-Division
<i>Seksi Pendidikan Dasar</i>	Primary Education Section
<i>Seksi Pendidikan Masyarakat</i>	Community Education Section
<i>Seksi Pembinaan Generasi Muda dan Keolahragaan</i>	Youth and Sports Section
<i>Seksi Kebudayaan</i>	Culture

The Sub-District office of education consists of a group of local education inspectors and has the following sub-units:-

<i>Urusan Tata Usaha</i>	Administrative Unit
<i>Penelik Taman Kanak Kanak dan Sekolah Dasar</i>	Kindergarten and Primary School Inspector
<i>Penelik Pendidikan Masyarakat</i>	Community Education Inspector
<i>Penelik Pembinaan Generasi Muda</i>	Youth Affairs Inspector
<i>Penelik Keolaragaan</i>	Sports Inspector
<i>Penelik Kebudayaan</i>	Culture Inspector

The structure of the *Dinas* for Education is governed by the Department of Home Affairs (as are all *dinas* structures) in *Instruksi Menteri Dalam Negeri (Inmendagri)* 8/1980. The prescribed structure at provincial level is:-

<i>Bagian Tata Usaha</i>	Administration
<i>Sub Dinas Gedung dan Bangunan</i>	School buildings
<i>Sub Dinas Subsidi/Bantuan</i>	Subsidies and Assistance
<i>Sub Dinas Tenaga Guru dan Tenaga Teknis</i>	Teacher and Technical Skills
<i>Sub Dinas Pengadaan Perlengkapan dan Alat Pelajaran</i>	Educational Supplies and Equipment
<i>Sub Dinas Pengadaan Perbukuan</i>	Book Supplies

The prescribed structure for *Dinas* Level 2 Education offices is:-

<i>Sub Bagian Tata Usaha</i>	Administration
<i>Seksi Subsidi/Bantuan</i>	Subsidies and Assistance

Seksi Tenaga Guru dan Tenaga Teknis
Seksi Pengadaan Perlengkapan
dan Sarana Sekolah

Teacher and Technical Skills
 School Supplies and Facilities

3.3.7.2 Responsibilities of *Kanwil* and *Dinas*

The *Kepala Kantor Wilayah* is directly responsible to the Minister of Education. All educational activities in the provinces come under the control of the *kantor wilayah*, with the exception of primary and university level education. The former is predominantly controlled by the regional governments in the form of the *dinas*. Tertiary education is controlled by the national government directly from Jakarta. Educational responsibilities in the regions are summarised in Table 3.3.2.

Whilst Table 3.3.2 indicates a minimal role for the *Dinas* of Education, this is not in fact the case. Each province has hundreds of primary schools, all of which are the responsibility of the *dinas* offices who are responsible for the management of all

Type of Educational Establishment	Responsible unit
State Universities	<i>Ditjen Pendidikan Tinggi</i>
Private Universities	<i>Ditjen Pendidikan Tinggi</i>
Polytechnics	<i>Ditjen Pendidikan Tinggi</i>
Teacher training	<i>Ditjen Pendidikan Tinggi</i>
Specialist Higher Education Establishments	<i>Departments/Dep Dikbud</i>
State High Schools	<i>Kantor Wilayah</i>
State Technical High Schools	<i>Kantor Wilayah</i>
State Middle Schools	<i>Kantor Wilayah</i>
State Primary Schools	<i>Dinas</i>
Kindergarten	<i>Kantor Wilayah</i>
Museums	<i>Kantor Wilayah</i>
Archaeological Sites	<i>Kantor Wilayah</i>
Public Libraries	<i>Kantor Wilayah</i>
Sports	<i>Kantor Wilayah</i>
Youth Activities	<i>Kantor Wilayah</i>
Technical Implementation Unit Schools	<i>Kantor Wilayah</i>
Technical Implementation Unit Non-Schools	<i>Kantor Wilayah</i>
Technical Implementation Unit Cultural Units	<i>Kantor Wilayah</i>
Technical Implementation Unit Museums	<i>Kantor Wilayah</i>
Technical Implementation Unit Teacher Upgrading Centres	<i>Kantor Wilayah</i>

Table 3.3.2 Educational responsibilities in the regions

Instruksi Presiden Primary School Grants, the management of school building construction and maintenance and the provision of supplies and education materials.

They are also responsible for the recruitment and management of all primary school teachers and staff. They are not, however, responsible for curriculum development; this is considered a national function, and the responsibility of the *Kantor Wilayah*.

3.3.8 Universities

3.3.8.1 University Structures

Universities are not the responsibility of either the *Kanwil* or the *Dinas* local education authorities; they are controlled directly from Jakarta, with university rectors responsible directly to the Minister of Education. For day-to-day matters this means they contact the D.G of Higher Education. There are 45 State Universities in Indonesia, including the universities that have been given the accolade of Centre of Excellence. There are over 1,000 private institutions of higher education, although this number is constantly increasing due to the very high demand for tertiary education.

Indonesian Universities have a common mission known as the "*Tridharma Perguruan Tinggi*" or 3-fold higher education duty. This is to provide teaching, research and public service. Teaching encompasses the wide variety of higher educational courses available in Indonesia. Research should show outcomes that are of use in the development of the country. Public services refers to the provision of services to the people of Indonesia that result from teaching and research activities.

The organisation of state universities is shown in Figure 3.3.1.

Private universities are more varied in structure, as decisions on structure are the prerogative of the organisations that run them. However, the Government requires that all private universities come under the umbrella of regional private higher education cooperatives; *Koperasi Perguruan Tinggi Swasta* or *Kopertis*. There are nine of these *Kopertis* in Indonesia:-

<i>Kopertis Wilayah 1</i>	Medan, covering Aceh, Sumut, Sumbar, Riau
<i>Kopertis Wilayah 2</i>	Palembang, covering Sumsel, Jambi, Bengkulu, Lampung, Kalbar
<i>Kopertis Wilayah 3</i>	Jakarta, covering Jakarta only
<i>Kopertis Wilayah 4</i>	Bandung, covering Jabar
<i>Kopertis Wilayah 5</i>	Yogyakarta, covering DIY
<i>Kopertis Wilayah 6</i>	Semarang, covering Jateng
<i>Kopertis Wilayah 7</i>	Surabaya, covering Jatim, Kalsel, Kaltim, Kalteng
<i>Kopertis Wilayah 8</i>	Denpasar, covering Bali, NTB, NTT, Timtim
<i>Kopertis Wilayah 9</i>	Ujung Pandang, covering Sulsel, Sulteng, Sultra, Sulut, Maluku, Irian Jaya

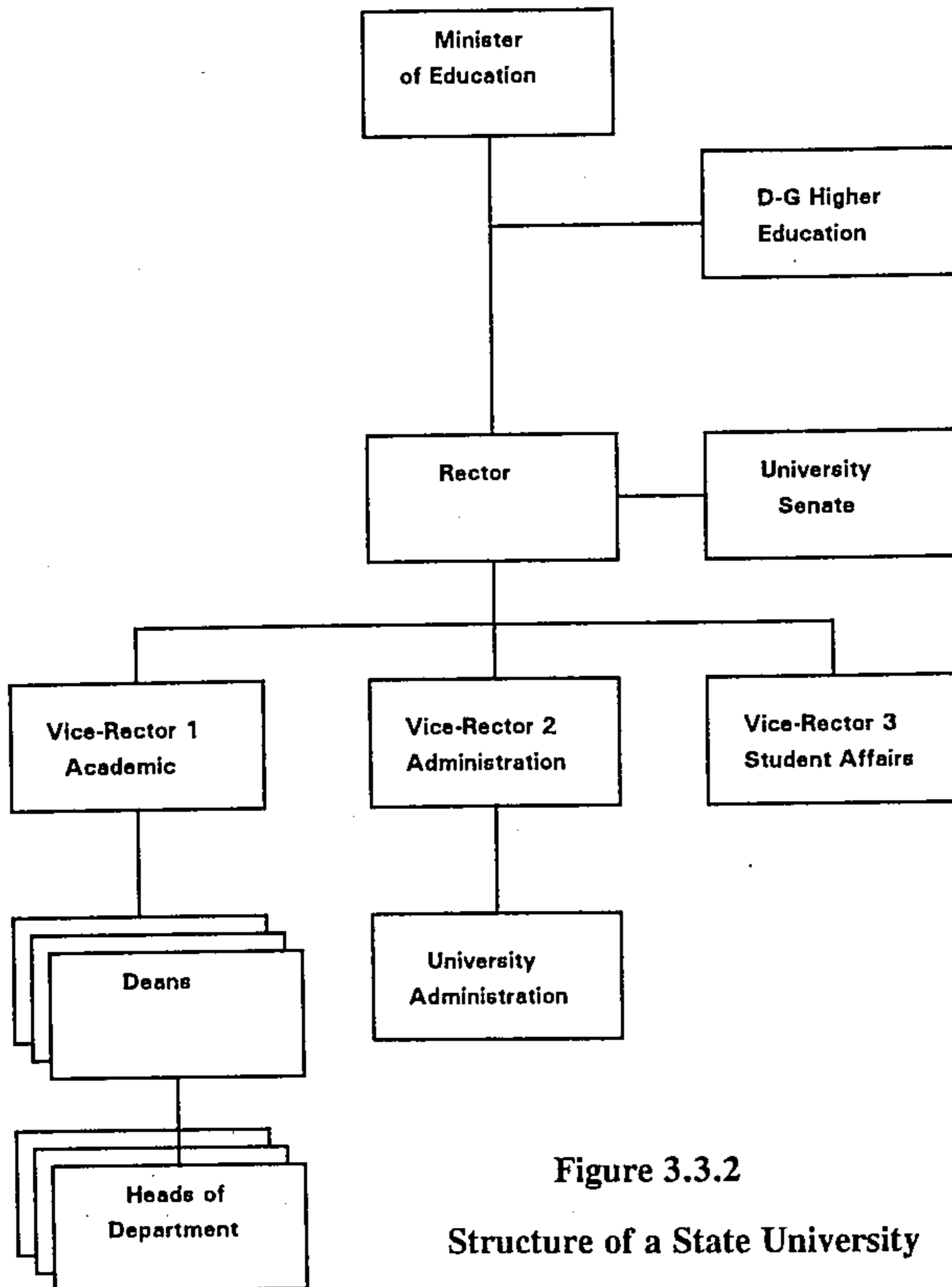


Figure 3.3.2
Structure of a State University

Each *Kopertis* is run by a *Sekretariat Pelaksana Kopertis*, (*Kopertis* Implementation Secretariat) headed by a Coordinator. The Coordinator is directly responsible to the Minister of Education, and is an established administrator from a state university in the *Wilayah* handled by the *Kopertis*. The Secretariat is under the aegis of the Director General of Higher Education. The aim of this system is to ensure that private universities maintain educational standards set by the national government. The Secretariat of the *Kopertis* is organised as follows:-

<i>Bagian Bimbingan</i>	Leadership and Educational Guidance
<i>Bagian Bantuan</i>	State Financial Assistance
<i>Bagian Ujian Negara</i>	State Examinations
<i>Bagian Evaluasi</i>	Program Evaluation
<i>Bagian Tata Usaha</i>	Administration

3.3.8.2 Qualifications available from education establishments

It is useful to be familiar with the system of qualifications used in Indonesia and the equivalents in western terms. For a discussion of how these qualifications may affect careers in the public service see Section 1.6.1.2. The basic qualification levels are :-

S3	Stratum 3, equivalent to a doctoral degree
S2	Stratum 2, equivalent to a masters degree
S1	Stratum 1, equivalent to a bachelor's degree
SP1	Special Professional 1, a specialist diploma awarded in fields such as irrigation
D4	Diploma 4
D3	Diploma 3
D2	Diploma 2
D1	Diploma 1
SMA	<i>Sekolah Menengah Atas</i> , Senior High School Certificate
SMP	<i>Sekolah Menengah Pertama</i> , Junior High School Certificate
SD	<i>Sekolah Dasar</i> , Primary School Certificate

A number of special academic letters are also awarded in different professions. The practice of using letters after a persons name is more common in Indonesia than in western countries. The common Indonesian letters are:-

Ir	<i>Insinyur</i>	a higher engineering degree at S1/S2 level
SH	<i>Sarjana Hukum</i>	a Master of Law degree
Dr.	<i>Dokter</i>	a Doctorate or a Physician's Degree
Dra.	<i>Doktoranda</i>	awarded to females for post-graduate degrees (S2) below doctoral rank in the humanities. After 1980 this was equivalent to a Baccalaureate.
Drs.	<i>Doktorandas</i>	as for Dra. for male holders of the degree
Drg.	<i>Dokter Gigi</i>	dentist
Drh.	<i>Dokter Hewan</i>	veterinarian

Indonesians with foreign qualifications will use the letters awarded abroad.

3.3.9 Relevant legislation

Whilst there are many regulations regarding the organisation, implementation and control of educational activity, the following are particularly important:-

Regulation title	Regulation Number
The National Education System	UU 2/1989
Pre-school Education	PP 27/1990
Primary Education	PP 28/1990
Secondary Education	PP 29/1990
Higher Education	PP 30/1990
Organisation and Management of the Secretariat-General	0222a/O/1980
Organisation and Management of the D.G of Basic and Middle Education	0222b/O/1980
Organisation and Management of the D.G of Higher Education	0222c/O/1980
Organisation and Management of the D.G of Extra-curricular Activities, Youth and Sport	0222d/O/1980
Organisation and Management of the D.G of Culture	0222e/O/1980
Organisation and Management of the Education R and D Body	0222f/O/1980
Organisation and Management of Central Support Bodies for Education	0222g/O/1980
Organisation and Management of <i>Kantor Wilayah</i> for Education	0222h/O/1980
Changes to Central Support Body Organisation and Management	0164/O/1981
Organisation and Management of Private Higher Education	062/O/1982
Organisation and Management of Departmental Training Centre	0289/O/1982
Organisation and Management of <i>Kantor Wilayah</i> in Education	0173/O/1983
Guidelines on the Position of Higher Education Institutions	0686/U/1991
Acronyms Used in the Department of Education	0318/U/1983

Table 3.3.3 Regulations in the field of education

3.3.10 Some Educational Acronyms

The Department of Education and Culture (*Depdikbud*) uses a number of specialist acronyms, which can be confusing for foreigners working in the Indonesian education system. Most of the following list is extracted from the Department's own explanatory regulation on acronyms (*Keputusan Menteri Pendidikan dan Kebudayaan* 0318/U/1983):-

Acronym	Full Name
<i>Balitbang Dikbud</i>	<i>Badan Penelitian dan Pembangunan Pendidikan dan Kebudayaan</i> Education and Culture R and D Agency
<i>Binmudora</i>	<i>Pembinaan Generasi Muda dan Keolahragaan</i> Youth Guidance and Sports
<i>Depdikbud</i>	<i>Departemen Pendidikan dan Kebudayaan</i> Department of Education and Culture
<i>Dikdasgu</i>	<i>Pendidikan Dasar dan Guru</i> Primary and Teacher Education

<i>Dit Binlitabmas</i>	<i>Direktorat Pembinaan Penelitian dan Pengabdian pada Masyarakat</i> Directorate for the Development of Research and Public Service
<i>Dit Binsarak</i>	<i>Direktorat Pembinaan Sarana Akademis</i> Directorate of Academic Facilities Development
<i>Dit Dikgutentis</i>	<i>Direktorat Pendidikan Guru dan Tenaga Teknis</i> Directorate of Teacher and Technical Skill Training
<i>Dit Dikmenjur</i>	<i>Direktorat Pendidikan Menengah Kejuruan</i> Directorate of Special Secondary Education
<i>Dit Dikmenum</i>	<i>Direktorat Pendidikan Menengah Umum</i> Directorate of Secondary Education
<i>Dit Diktentis</i>	<i>Direktorat Pendidikan Tenaga Teknis</i> Directorate of Technical Education
<i>Dit Gutiswa</i>	<i>Direktorat Perguruan Tinggi Swasta</i> Directorate of Private Universities
<i>Dit Jarahnitra</i>	<i>Direktorat Sejarah dan Nilai Tradisional</i> Directorate of History and Traditional Values
<i>Ditbinmud</i>	<i>Direktorat Pembinaan Generasi Muda</i> Directorate of Guidance of the Younger Generation
<i>Ditbinwa</i>	<i>Direktorat Pembinaan Kesiswaan</i> Directorate of Student Development
<i>Ditbinyan</i>	<i>Direktorat Pembinaan Penghayat Kepercayaan Terhadap Tuhan Yang Maha Esa</i> Directorate of Spiritual Belief in One God
<i>Ditdikdas</i>	<i>Direktorat Pendidikan Dasar</i> Directorate of Primary Education
<i>Ditdikmas</i>	<i>Direktorat Pendidikan Masyarakat</i> Directorate of Community Education
<i>Ditjen Dikdasmen</i>	<i>Direktorat Jenderal Pendidikan Dasar dan Menengah</i> D - G of Primary and Secondary Education
<i>Ditjen Diklusepora</i>	<i>Direktorat Jenderal Pendidikan Luar Sekolah, Pemuda dan Olahraga</i> D - G of Extra-Curricula Activity, Youth, Sport
<i>Ditjen Dikti</i>	<i>Direktorat Jenderal Pendidikan Tinggi</i> D - G of Higher Education
<i>Ditjenbud</i>	<i>Direktorat Jenderal Kebudayaan</i> D - G of Culture
<i>Ditlinbinjarah</i>	<i>Direktorat Perlindungan dan Pembinaan Peninggalan Sejarah dan Purbakala</i> Directorate of Archaeology/Artifacts Protection and Development
<i>Ditmawa</i>	<i>Direktorat Kemahasiswaan</i> Directorate of Student Development
<i>Ditmus</i>	<i>Direktorat Permuseuman</i> Directorate of Museums
<i>Ditora</i>	<i>Direktorat Keolahragaan</i> Directorate of Sports
<i>Ditsardik</i>	<i>Direktorat Sarana Pendidikan</i> Directorate of Educational Facilities
<i>Ditseni</i>	<i>Direktorat Kesenian</i> Directorate of Arts
<i>Ditseswa</i>	<i>Direktorat Sekolah Swasta</i> Directorate of Private Schools
<i>Itjen</i>	<i>Inspektorat Jenderal</i>

	Inspectorate General
<i>Kopertis</i>	<i>Koperasi Perguruan Tinggi Swasta</i> Private Higher Education Cooperative
<i>Kormin</i>	<i>Koordinator Administrasi</i> Administrative Coordinator (Usually in <i>kanwil</i>)
<i>Rokerslugri</i>	<i>Biro Kerjasama Luar Negeri</i> Bureau for Foreign Cooperation (Secretariat-General)
<i>Rokumhumas</i>	<i>Biro Hukum dan Hubungan Masyarakat</i> Bureau for Law and Public Relations (Secretariat-General)
<i>Rogan</i>	<i>Biro Organisasi</i> Bureau for Organisation (Secretariat-General)
<i>Rokap</i>	<i>Biro Perlengkapan</i> Bureau of Supplies (Secretariat-General)
<i>Roku</i>	<i>Biro Keuangan</i> Bureau of Finance (Secretariat-General)
<i>Ropeg</i>	<i>Biro Kepegawaian</i> Bureau of of Personnel (Secretariat-General)
<i>Roren</i>	<i>Biro Perencanaan</i> Bureau of Planning (Secretariat-General)
<i>Rotaus</i>	<i>Biro Tata Usaha</i> Bureau of Administration (Secretariat-General)

Table 3.3.4 Some educational acronyms

Combinations and permutations of these aconyms are also used, such a the prefixing of "ka" for *kepala* or head. Thus *Karo Kerslugri* is the *Kepala Biro Kerjasama Luar Negeri*. There are further acronyms used at Provincial and District level. It is advisable to ask for clarification when they are used.